



## BM-U243F

## 23.8" UHD 12GSDI 4K HDR Broadcast Monitor

### Features

#### ■ 23.8-inch UHD LCD

3840x2160 UHD native resolution, 10bit 1.073G color, IPS LCD panel, H/V 178/178 viewing angle, 16.77M colors; LED backlight, 300nit, 1000:1 contrast

#### ■ Wider Color Gamut

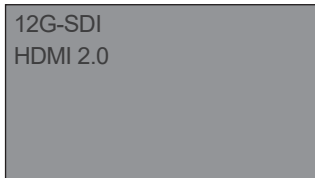
Support 100% ITU709, 94.1% DCI-P3 Color Gamut

#### ■ 18-bit Processing

Support internal 18-bit signal processing

#### ■ Multiple 4K interfaces

Support multiple 4K inputs of 2x 12G-SDI, Quad-link 3G-SDI (Quad & 2SI) and HDMI 2.0



Single link 4K input



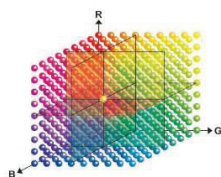
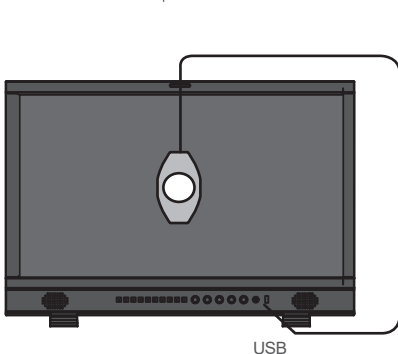
Quad link and 2SI 4K input

#### ■ HDR capability

Support HLG HDR, ST.2084 PQ and S-log3 HDR display to present realistic image.

#### ■ 3DLUT auto Calibration

Support 3DLUT 17x17x17 precise auto calibration, with built-in color generator and calibration software. Support X-rite i1 Display (special version) and JETI Specbos 1211 to directly plug into monitor USB port to auto calibrate.



Built-in 3DLUT calibration software, Directly connect color sensor probe to monitor USB port, and the monitor will calibrate itself automatically.

#### ■ Built-in De-log LUTs

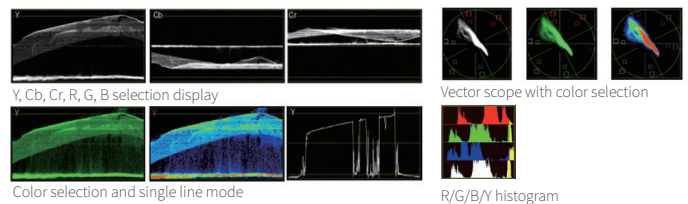
With built-in De-log LUTs including Log-C, S-log2, S-log3, C-log, V-log and RedLogFilm LUTs, to convert to ITU709 directly

#### ■ User 3DLUT upload

Support user 3DLUT cube files to upload by USB, which is convenient for color creation during post-production monitoring.

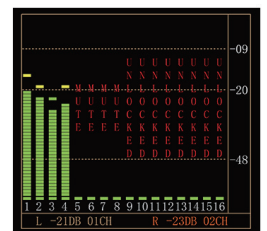
#### ■ Waveform/Vector/Histogram

Support waveform selection display (Y, Cb, Cr, R, G, B), and single lines selection mode; support vector scope and R/G/B/Y histogram display, with multiple display position, size and color selection.



#### ■ 16-ch audio meters display

Support de-embed audio from SDI and HDMI, and display Max 16-ch audio level meters, with audio abnormal alerts info displayed on each audio bar. You can also select any 2 channels audio to output via 3.5mm socket or speakers.



#### ■ Others

- Support TSL 3.1/4.0/5.0 UMD display
- SDI timecode (LTC, VITC1&2) display
- Focus assist display mode
- R/G/B/Mono, False color, Zebra stripes
- H/V delay, freeze frame
- PI control and webserver IP control

# BM-U243F

## 23.8" UHD 12GSDI 4K HDR Broadcast Monitor

### Video Formats

#### SDI IN/OUT 1&2

4096×2160p (60 / 59.94 / 50 / 30 / 29.97 / 25 / 24 / 23.98)  
 3840×2160p (60 / 59.94 / 50 / 30 / 29.97 / 25 / 24 / 23.98)  
 2048×1080p (60 / 59.94 / 50 / 30 / 29.97 / 25 / 24 / 23.98)  
 2048×1080i (50 / 59.94 / 60)  
 1080p (60 / 59.94 / 50)  
 1080i (60 / 59.94 / 50)  
 1080p (30 / 29.97 / 25 / 24 / 23.98)  
 1080psf (30 / 29.97 / 25 / 24 / 23.98)  
 720p (60 / 59.94 / 50)  
 480i (59.94)  
 576i (50)

#### SDI IN/OUT 3&4

2048×1080p (60 / 59.94 / 50 / 30 / 29.97 / 25 / 24 / 23.98)  
 2048×1080i (50 / 59.94 / 60)  
 1080p (60 / 59.94 / 50)  
 1080i (60 / 59.94 / 50)  
 1080p (30 / 29.97 / 25 / 24 / 23.98)  
 1080psf (30 / 29.97 / 25 / 24 / 23.98)  
 720p (60 / 59.94 / 50)  
 480i (59.94)  
 576i (50)

#### HDMI IN

4096×2160p (60 / 59.94 / 50 / 30 / 29.97 / 25 / 24 / 23.98)  
 3840×2160p (60 / 59.94 / 50 / 30 / 29.97 / 25 / 24 / 23.98)  
 1080p (60 / 59.94 / 50 / 30 / 29.97 / 25 / 24 / 23.98)  
 1080i (60 / 59.94 / 50)  
 720p (60 / 59.94 / 50)

### Specifications

MODEL	BM-U243F	
Display	LCD Size	23.8 inches
	Resolution	3840×2160
	Aspect Ratio	16:9
	Color Depth	10bit 1.073G
	Signal Process	18bit
	Color Gamut	100% Rec709; 94.1% DCI-P3
	Viewing angle	H/V 178/178
	Backlight	LED
	Brightness	300nit
	Contrast	1000:1
Input	SDI	12G/6G/3G-SDI × 2
		3G-SDI × 2
	HDMI	HDMI 2.0 × 1
	UMD	RS485 × 1
	GPI (Tally)	RS485 × 1
	Ethernet	RJ45 × 1, 1000M
Output	SDI	12G/6G/3G-SDI × 2
		3G-SDI × 2
	Analog audio	3.5mm headphone + Speaker
General	UMD	RS485 × 1
	AC Input	AC 100-240V 50/60Hz
	DC Input	DC 12-19V
	Power Consumption	≤ 70W
	Working Temperature	0°C - +40°C
	Working Humidity	10% - 90%
	Storage Temperature	- 15°C - + 60°C
	Storage Humidity	10% - 90%