

# SWIT

## 90W Ultra Slim Strip Panel LED

**PL-E90L**



### 0.5×3' Size Slim Strip Light

PL-E90L is a strip light with 0.5×3 feet size, and the edge mounted SMD LEDs make the light ultra slim of 21mm thickness only, solid and portable.



### 90W 2000Lux@1m

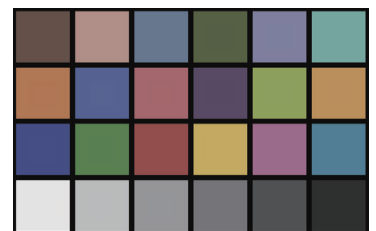
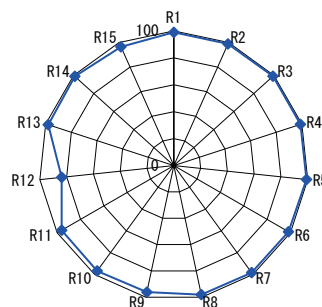
480pcs SMD-LEDs mounted in the inner edge of the light frame, and with SWIT unique 90° light guide technology, PL-E90L output 2000Lux @ 1 meter high intensity, soft and equally spread light.

### 2700K-6500K Adjustment

PL-E90L mixed with 90W 2700K and 90W 6500K SMD LEDs, continuously adjustable from 2700K to 6500K, 90W high intensity output at any color temperature.

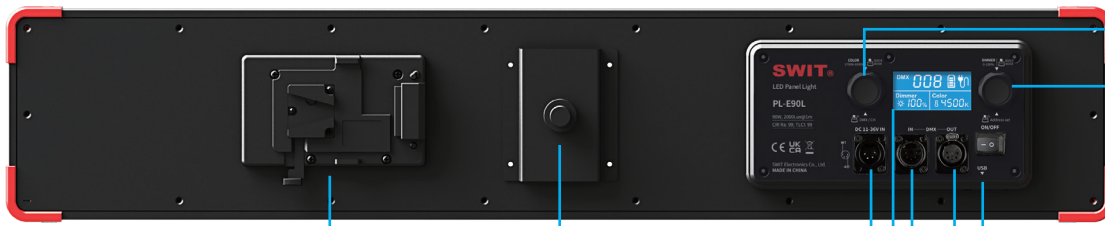
### CRI 99; TLCI 99

PL-E90L adopts high consistency SMD LEDs and customized the phosphor formulation to raise R9 red color performance. Both Ra and TLCI reach 99, to keep the original color of the objects under the light.





## Power and Control



**COLOR TEMP 2700K-6500K**

Short Press:  
2700/3200/4500/5600/6500K  
Directly quick switching  
Long Press:  
Console mode (DMX) or  
Interactive mode (CH) switch

**DIMMER 0-100%**

Short Press:  
10% step quick switching  
Long Press:  
Set DMX address

**5-pin DMX512 IN & OUT**

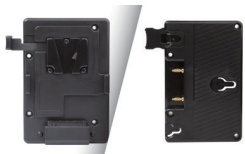
N=Dimmer; N+1=Color Temp

**5V USB power output**

To power wireless DMX adaptor

**V-mount plate**

Gold mount for option



**Install Knob**

Provide Rotatable  
Light stand connector

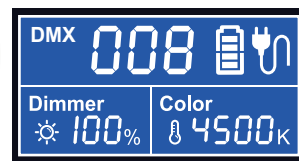


**4-pin DC 11-36V IN**

Provide AC-DC adaptor



**Control Info Display**



## Single Light Package

- 1x PL-E90L light with barndoor
- 1x Rotatable Light stand connector
- 1x AC-DC adaptor
- 1x Carrying bag



## 3-Light Interview Kit

- 3x PL-E90L light with barndoor
- 3x Rotatable Light stand connector
- 3x Light stand
- 3x AC-DC adaptor
- 1x Trolley case for everything



## Specifications

Model	PL-E90L
LEDs	480pcs SMD LEDs
Color Temp	2700K-6500K
Illuminance	2000Lux @ 1m
Color Render	CRI 99; TLCI 99
Input Voltage	DC 11-36V
Power	Max 90W
Net Weight	4.9kg

